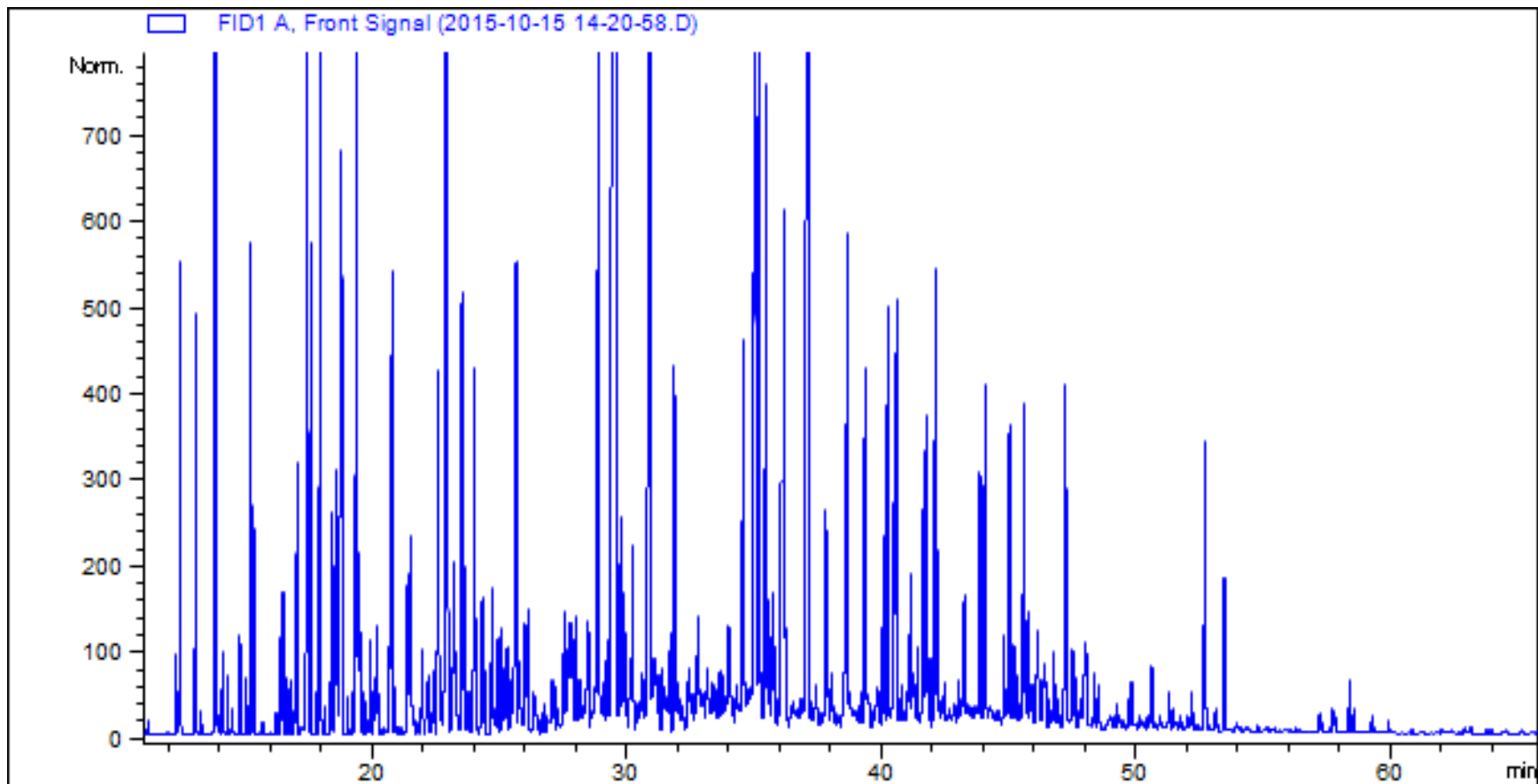


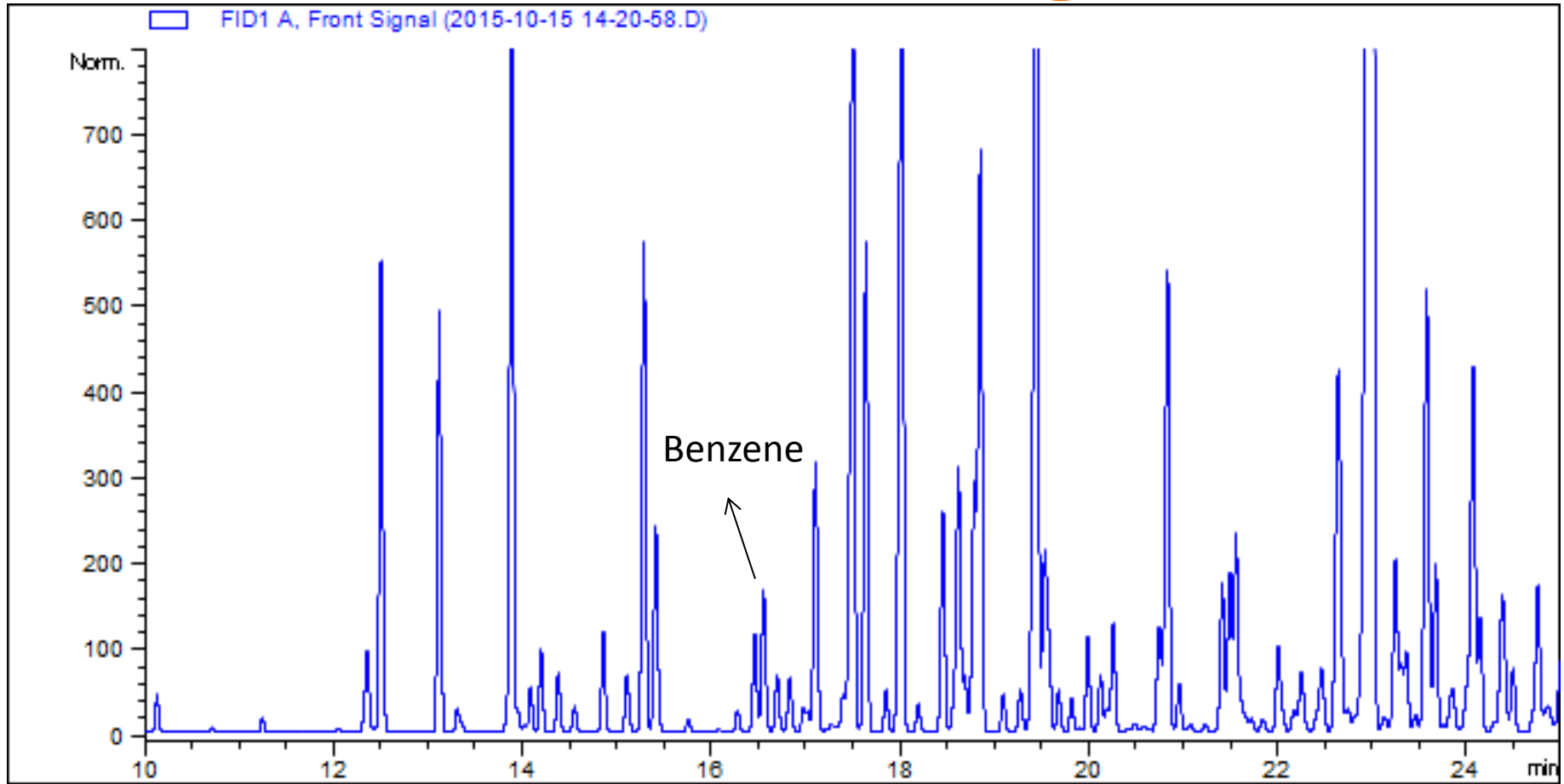
# Instrumentation Conditions

- GC: Agilent 7890 w/ FID
- Cat no: *9006-pona 100m x 0.25mm x 0.5um*
- Oven: 35 °C (5min) 3 °C /min 280 °C (1min)
- Carrier: Hydrogen, column flow 1.1ml/min
- Inlet: Split, 275 °C, split ratio 30:1
- Detector: FID 325 °C
- Samples: gasoline sample
- Inject volume: 1ul

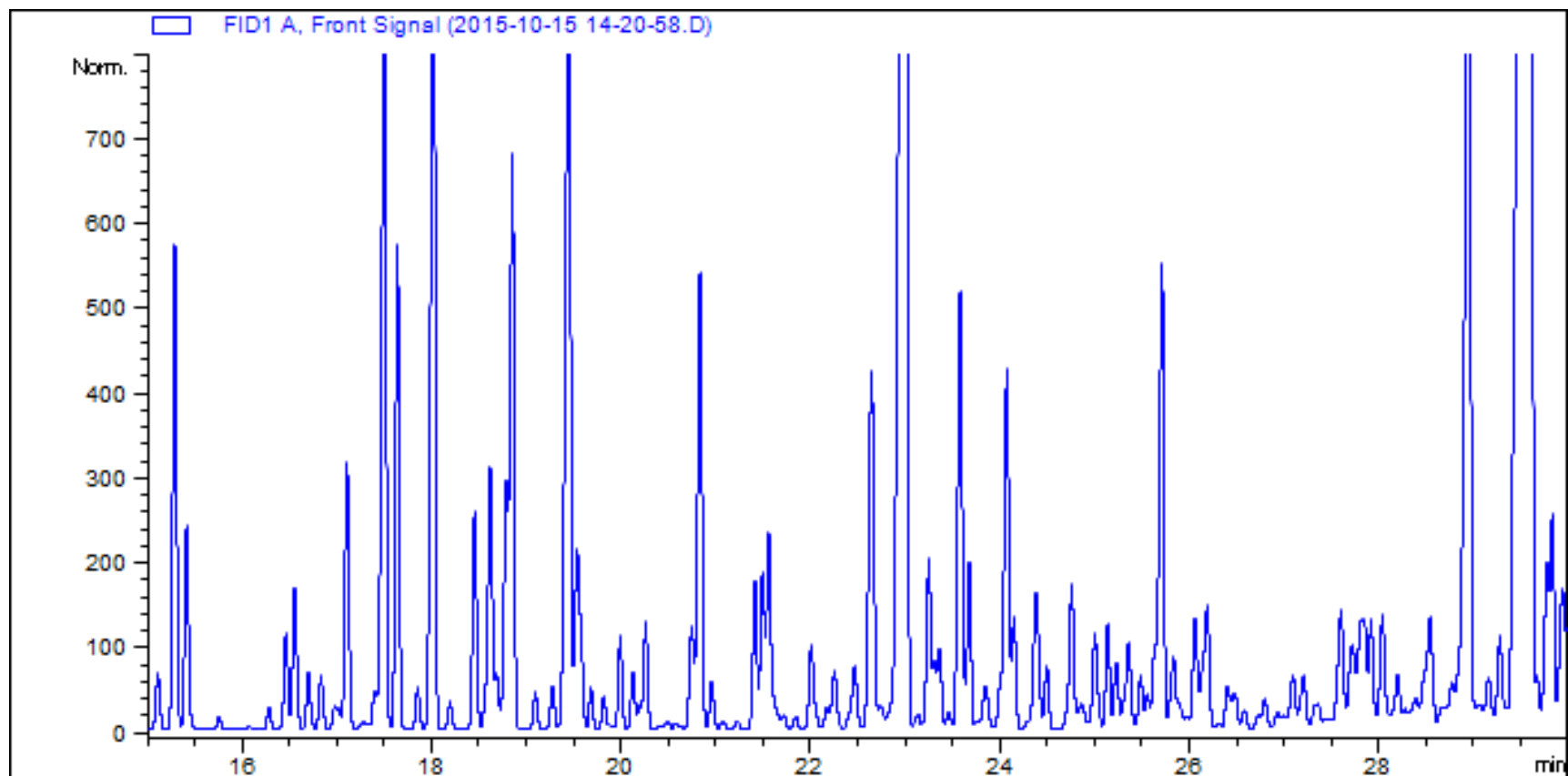
# Chromatogram of Gasoline



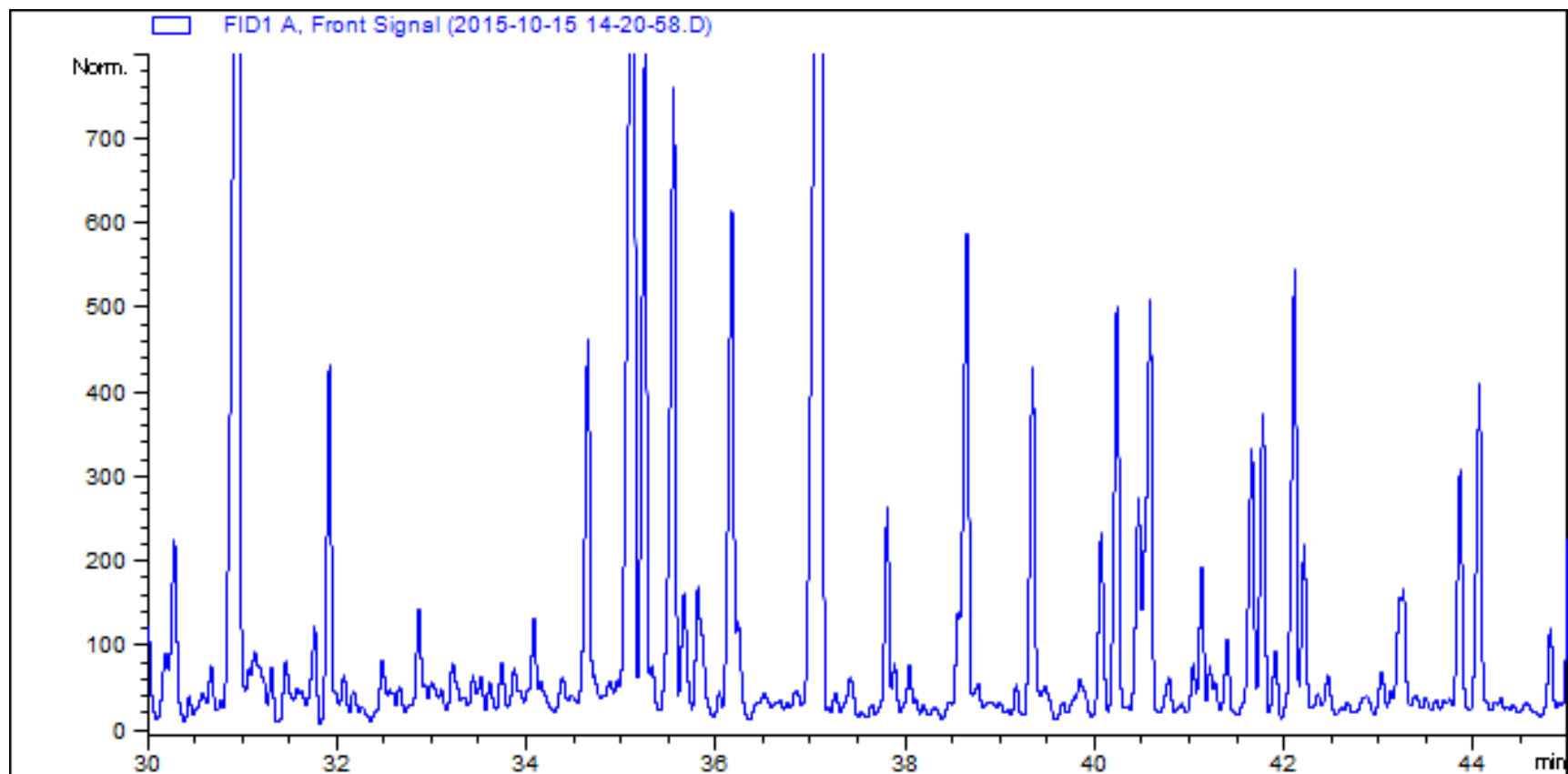
# Zoom in Chromatogram



# Zoom in Chromatogram (continued)



# Zoom in Chromatogram (continued)



# Zoom in Chromatogram (continued)

