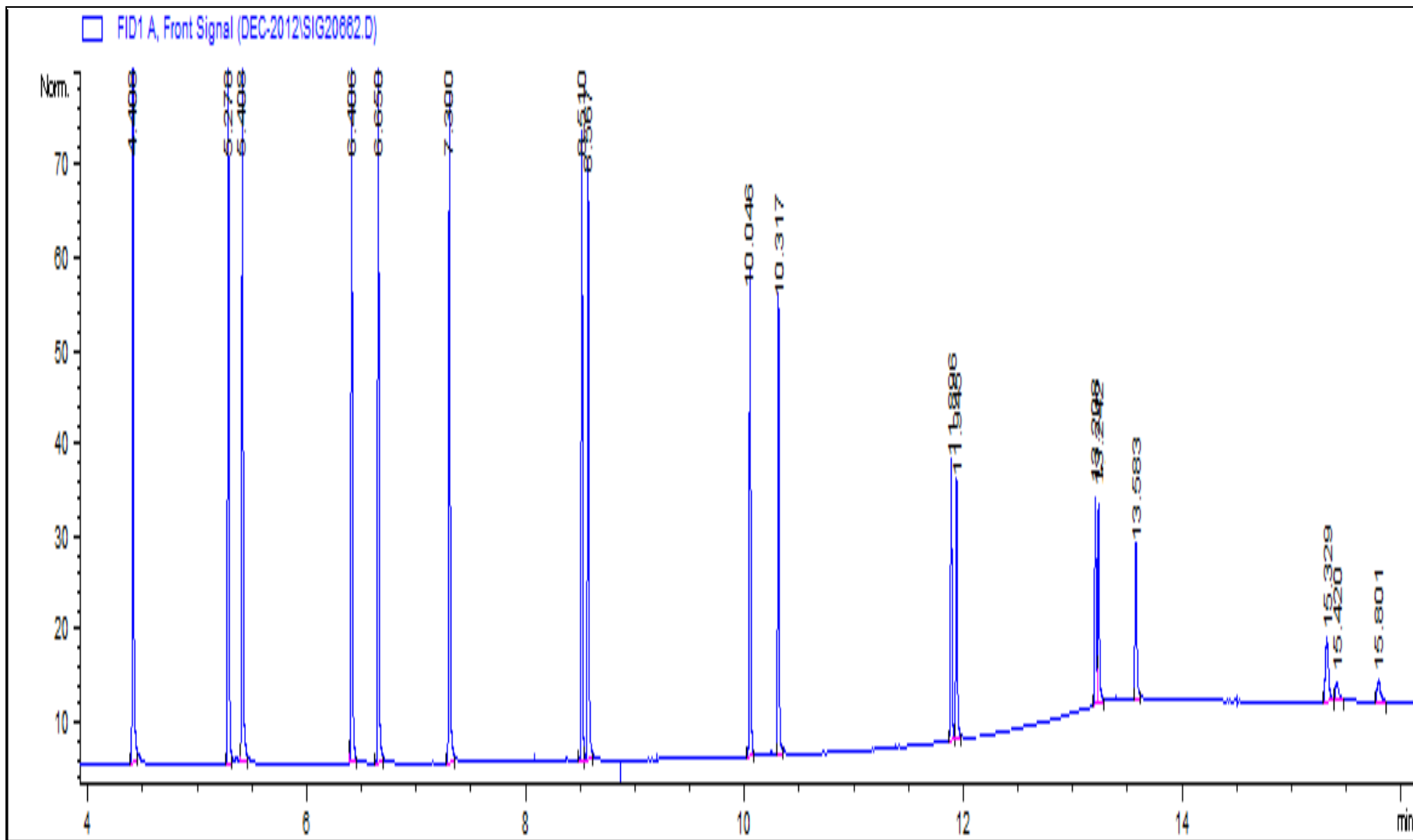


# Instrumentation Conditions

- GC: Agilent 7890 w/ FID
- Cat no: *GsBP-PAH 20m x 0.18mm*
- Oven: 60 °C (1min) 18 °C /min 280 °C (15min)
- Carrier: Hydrogen, column flow 1.2ml/min
- Inlet: Split, 275 °C, split ratio 50:1
- Detector: FID 325 °C
- Samples: EPA Method 8310 PAH Mixture (18 components)
- Inject volume: 1ul



**Peak Identifications and Resolutions**

<b>Peak</b>	<b>Compound</b>	<b>Chinese Name</b>	<b>Retention Time</b>	<b>Resolution</b>
1	Naphthalene	萘	4.41	
2	1-Methylnaphthalene	1-甲基萘	5.28	
3	2-Methylnaphthalene	2-甲基萘	5.41	
4	Acenaphthylene	茈烯	6.41	
5	Acenaphthene	茈	6.65	
6	Fluorene	芴	7.30	
7	Phenanthrene	菲	8.51	
8	Anthracene	蒽	8.57	3.77
9	Fluoranthene	荧蒽	10.05	

## Peak Identifications and Resolutions

Peak	Compound	Chinese Name	Retention Time	Resolution
10	Pyrene	芘	10.32	
11	Benzo[a]anthracene	苯并蒽	11.90	
12	Chrysene	屈	11.94	3.00
13	Benzo[b]fluoranthene	苯并[b]荧蒽	13.21	
14	Benzo[k]fluoranthene	苯并[k]荧蒽	13.24	2.07
15	Benzo[a]pyrene	苯并[a]芘	13.58	
16	Dibenzo[a,h]anthracene	二苯并[ah]蒽	15.33	
17	Benzo[ghi]perylene	苯并[ghi]二萘嵌苯	15.42	2.76
18	Indeno[1,2,3-cd]pyrene	茚并(1,2,3-cd)芘	15.80	