

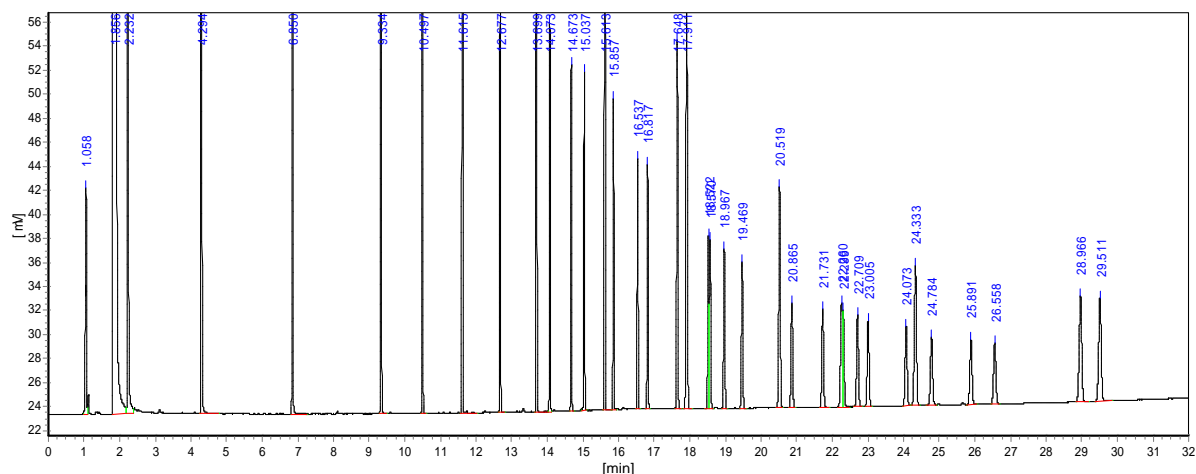
# GsBP GC COLUMN

## TEST PERFORMANCE SUMMARY

### Column Information

### Test Conditions

<b>Catalog No.:</b>	6825-3002	<b>Oven Temp.:</b>	TP	<b>Injector:</b>	S/S, 250 °C
<b>Serial No.:</b>	10102028	<b>Carrier Gas</b>	Hydrogen	<b>Detector:</b>	FID, 280 °C
<b>Stationary Phase:</b>	GsBP-FAMEWax	<b>Head Pressure:</b>	9psi	<b>Injection:</b>	1ul
<b>Column Length:</b>	30m	<b>Split Flow:</b>	80ml/min	<b>Holdup</b>	1.058(min)
<b>Column ID:</b>	0.25mm	<b>TP:</b>	50 °C (1min) 10°C/min to 200C	<b>Time:</b>	
<b>Film Thickness:</b>	0.25um		(1min) 2C/min to 260C hold		



Compound	Retention Time (min)	Compound	Retention Time (min)	Compound	Retention Time (min)	Compound	Retention Time (min)
C4:0	2.232	C15:1( <i>cis</i> -10)	15.037	C18:3(all- <i>cis</i> -6,9,12)	18.967	C22:0	24.333
C6:0	4.294	C16:0	15.613	C18:3(all- <i>cis</i> -9,12,15)	19.469	C22:1( <i>cis</i> -13)	24.784
C8:0	6.85	C16:1( <i>cis</i> -9)	15.857	C20:0	20.519	C22:2(all- <i>cis</i> -13,16)	25.891
C10:0	9.334	C17:0	16.537	C20:1( <i>cis</i> -11)	20.865	C22:6(all- <i>cis</i> -4,7,10,13,16,19)	29.511
C11:0	10.497	C17:1( <i>cis</i> -10)	16.817	C20:2(all- <i>cis</i> -11,14,)	21.731	C23:0	26.558
C12:0	11.615	C18:0	17.648	C20:3(all- <i>cis</i> -8,11,14)	22.709	C24:0	28.966
C13:0	12.677	C18:1( <i>trans</i> -9)	17.911	C20:3(all- <i>cis</i> -11,14,17)	22.26	C24:1( <i>cis</i> -15)	29.511
C14:0	13.699	C18:1( <i>cis</i> -9)	17.911	C20:4(all- <i>cis</i> -5,8,11,14)	23.005		
C14:1( <i>cis</i> -9)	14.073	C18:2(all- <i>trans</i> -9,12)	18.522	C20:5(all- <i>cis</i> -5,8,11,14,17)	24.073		
C15:0	14.673	C18:2(all- <i>cis</i> -9,12)	18.57	C21:0	22.299		

This document was created with Win2PDF available at <http://www.win2pdf.com>.  
The unregistered version of Win2PDF is for evaluation or non-commercial use only.