

GS-Tek

GS-Tek ANALYZER

Accuracy/High efficiency/Fast speed/Reliability



Offer you an accurate and reliable analytical solution
Diversified combinations and affordable system configuration
Timely after-sales support service, your best partner

With the rapid development of the natural gas industry, the requirement for accurate quantification of natural gas components is increasing. Natural gas is not only a raw material for chemical products, but also a widely used clean energy. Recently, with the introduction of advanced drilling technology, the application of shale gas has been effectively expanded. With the growing variety of the production environment, people pay more and more attention on gas composition analysis. The analyzer can achieve accurate quantification and analysis of natural gas components.



Natural Gas Analyer

Features of Analyzer:

1. Various configurations to be selected
2. Can add liquid valve and high-pressure liquid sampling device for the analysis of liquid natural gas
3. With durable packed column or capillary column, the system is stable and reliable.
4. Optional natural gas calorific value calculation software
5. Can extend to C16 analysis.



Natural Gas Analyzer I

Natural Gas Analyzer I

Instrument configurations:

Three valves / five columns (packed columns) / single TCD

Compliance with Test Method Standard:

GPA 2261

Note: this system can be equipped to SHIMADZU and AGILENT host system.

Sample:

Natural gas or similar component sample

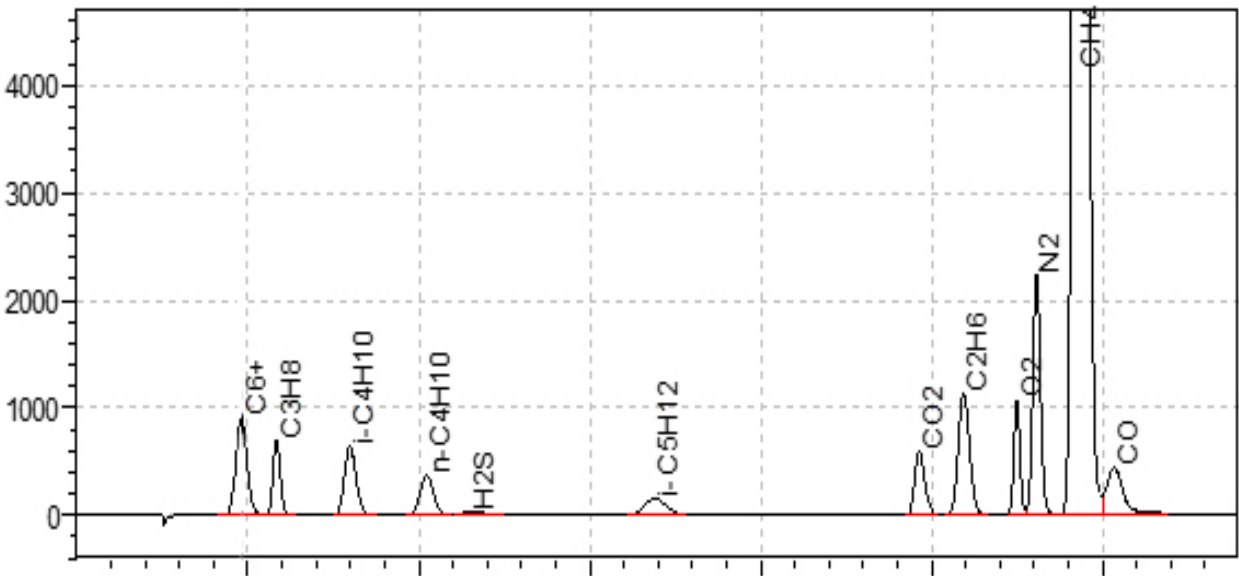
Target compounds:

O₂, N₂, CO, CO₂, H₂S, C₁~C₅ (methane, ethane, Propane, isobutane, 1-butane, isopentane) , C₆+

Detection sensitivity:

H₂S>500 ppm, other compounds>0.01%

Typical chromatogram:



Typical chromatogram 1



Natural gas Analyzer II

Instrument configurations:

Four valves / seven columns (packed columns) / dual TCD

Compliance with Test Method Standard:

ASTM D1945, GPA 2261

Note: this system can be equipped to SHIMADZU and AGILENT host system.

Sample:

natural gas or similar component sample

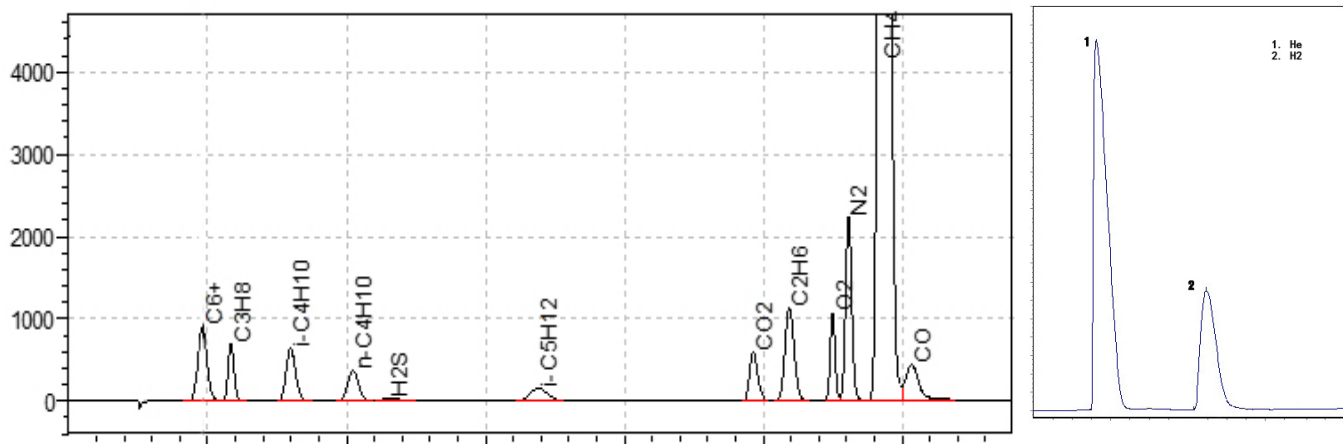
Target compounds:

H₂, He, O₂, N₂, CO, CO₂, H₂S and C₁~C₅ (methane, ethane, Propane, isobutane, 1-butane) , C₆+

Detection sensitivity:

H₂S > 500 ppm, other compounds > 0.01%

Typical chromatogram:



Typical chromatogram 2



Natural Gas Analyser III

Natural gas analyser III

Instrument configurations:

Four valves / five columns (packed columns and capillary columns) / dual TCD + FID, fast natural gas analysis

Compliance with Test Method Standard:

ASTM D1945, GPA 2261

Note: this system can be equipped to SHIMADZU and AGILENT host system

Sample:

natural gas or similar component sample

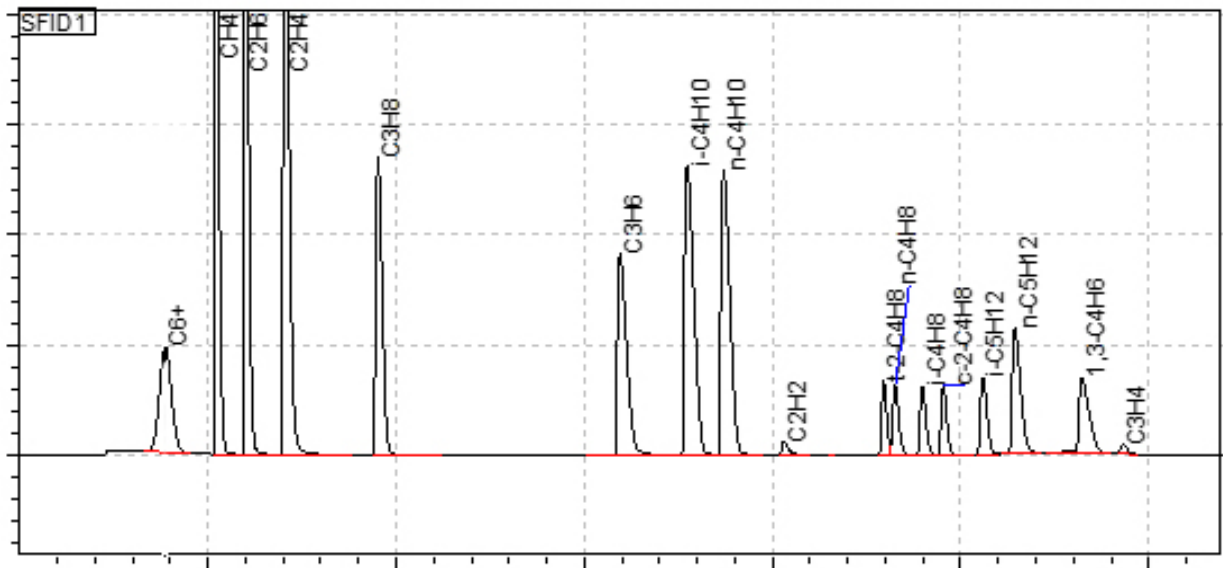
Target compounds:

H₂, He, O₂, N₂, CO, CO₂, C₁~C₅ Hydrocarbons and C₆+

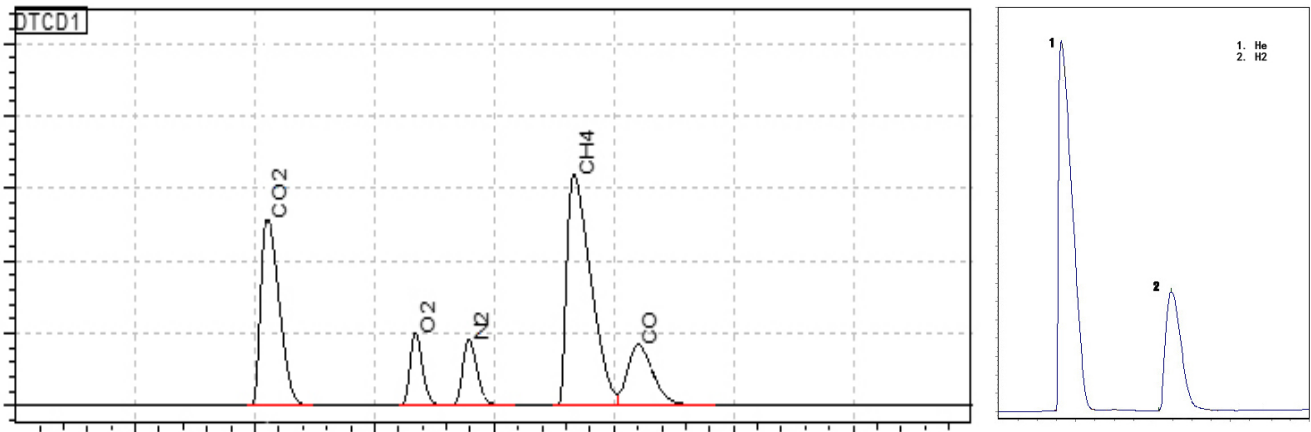
Detection sensitivity:

hydrocarbon > 10ppm, inorganic gas > 0.01%

Typical chromatogram:

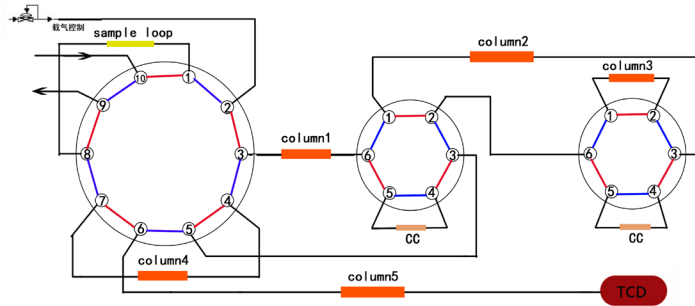


Typical chromatogram 3

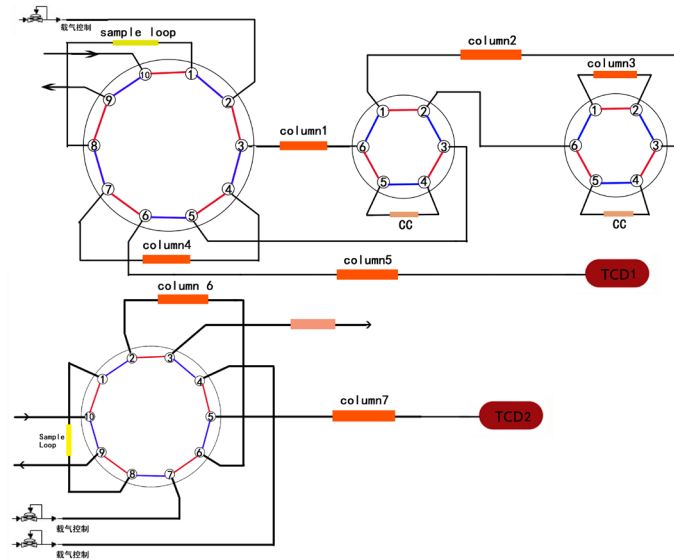


Typical chromatogram 4

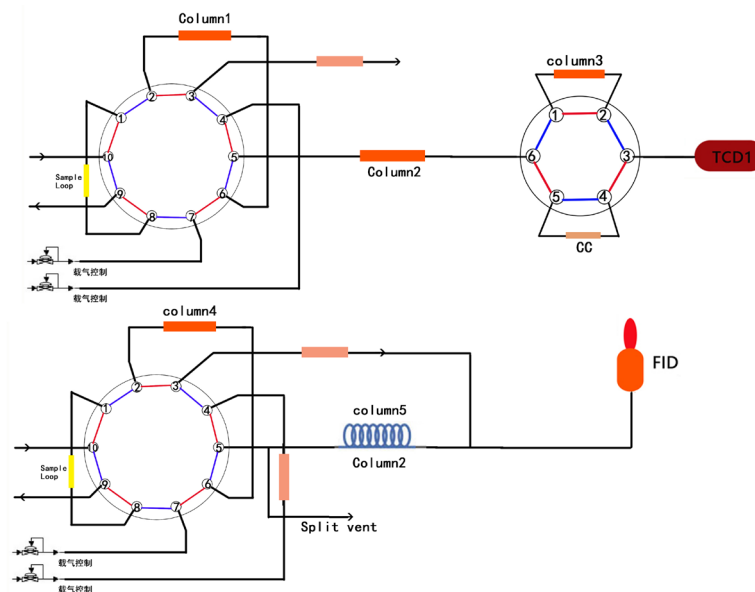
Typical flow diagram:



Typical flow diagram 1



Typical flow diagram 2



Typical flow diagram 3



About us :

GS-Tek is a professional column and analyzer manufacturer, located in the beautiful state of Delaware, USA.

GS-Tek produces high-quality gas and liquid chromatography columns with excellent performance and first-class quality.

GS-Tek provides solutions and turnkey analyzers for customers and partners.

GS-Tek has 40+ year practical experience and professional knowledge in the field of chromatography and application development.

GS-Tek won the US President Award in 2014 and was listed in the 2015 US White House Trade Book.

GS-Tek has a worldwide sales network and supply system, for more information, please visit our website: www.gs-tek.com

GS-Tek Misson:

Provide products with excellent quality and performance to customers.

Provide timely and effective technical support, competitive product price, and timely and fast product delivery to customers.

We help customers work on their challenging applications and provide high-quality service and professional technology to win the trust and support of users.

We believe that we not only sell products, but also want to become your trustworthy and reliable Partner.

Contact:

GS-Tek

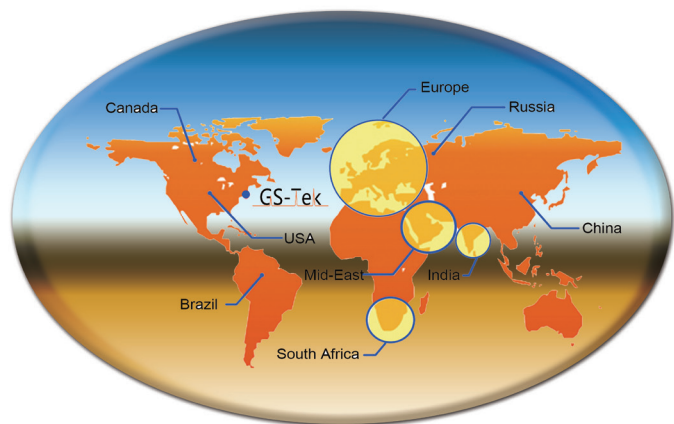
625 Dawson Drive, Ste A

Newark, DE 19713 USA

Phone: +1-302-533-5646

Email: info@gs-tek.com

Website: www.gs-tek.com



Global partners