

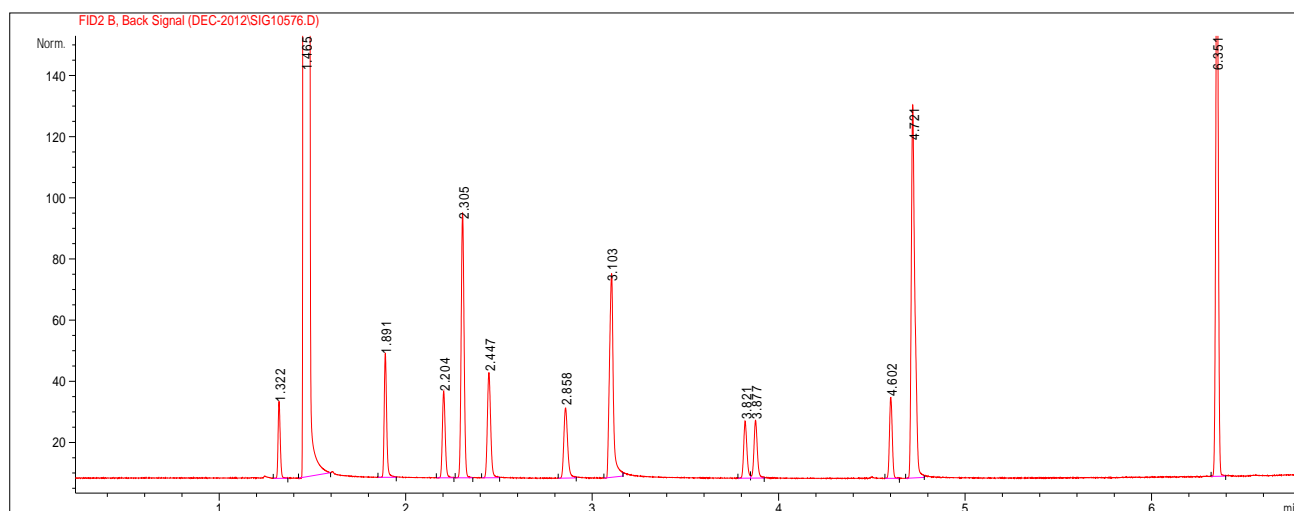
GsBP GC COLUMN

TEST PERFORMANCE SUMMARY

Column Information

Test Conditions

Catalog No.:	1125-3010	Oven Temp.:	TP	Injector:	S/S, 250 °C
Serial No.:	12093012	Carrier Gas:	Hydrogen	Detector:	FID, 300 °C
Stationary Phase:	GsBP-1Ms	Head Pressure:	7psi	Injection:	1ul
Column Length:	30m	Split Flow:	90ml/min	Holdup Time:	1.322(min)
Column ID:	0.25mm	TP:	65°C 5min 10°C/min		
Film Thickness:	1.0um		220°C 4min		



Peak No.	English Name	Retention Time (min)	Partition Ratio (k')	Theoretical Plates/m (n)
1	Methanol	1.322	0.000	1131
2	Ethanol	1.465	0.108	839
3	1-Propanol	1.891	0.431	1712
4	Ethyl Acetate	2.204	0.668	1912
5	2-Butanol	2.305	0.744	2054
6	Isobutanol	2.447	0.851	2016
7	1-Butanol	2.858	1.163	2279
8	3-Methyl-1-Butanol	3.103	1.348	2559
9	Active Amyl Alcohol	3.821	1.891	2612
10	n-Butyl Acetate	3.877	1.934	5065
11	3-Pentanol	4.602	2.482	10154
12	Ethyl Lactate	4.721	2.572	5945
13	Ethyl Hexanoate	6.351	3.806	21751