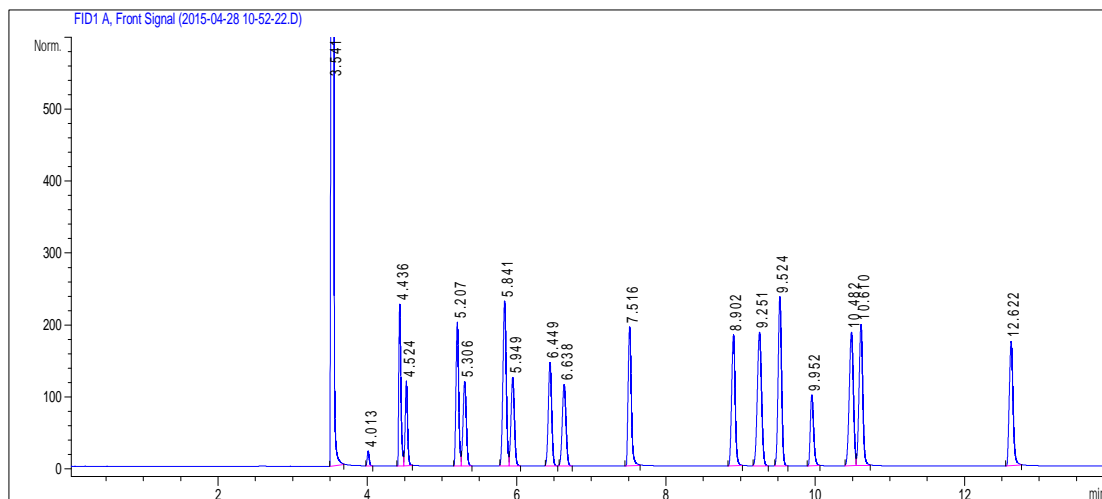


GsBP GC COLUMN TEST PERFORMANCE SUMMARY

Column Information

Test Conditions

Catalog No.:	6132-6010	Oven Temp.:	TP	Injector:	S/S, 240 °C
Serial No.:		Carrier Gas:	Hydrogen	Detector:	FID, 260 °C
Stationary Phase:	GsBP-1701	Head Flow:	2.5ml/min	Injection:	1ul
Column Length:	60m	Split Flow:	80ml/min	Holdup Time:	3.686min
Column ID:	0.32mm	TP:	40°C 5.5min 3°C/min 60°C		
Film Thickness:	1um		1min 15°C/min 150°C 1min		



Peak No.	Compound	Retention Time (min)	Partition Ratio (k')	Resolution
1	methanol	3.541	0.00	
2	ethyl ether	4.013	0.13	
3	dimethoxymethane	4.436	0.25	
4	ethanol	4.524	0.28	2.70
5	iso-propanol	5.207	0.47	
6	methyl tert-butyl ether (MTBE)	5.306	0.50	2.27
7	t-Butanol	5.841	0.65	
8	iso-propyl ether	5.949	0.68	2.19
9	methylcyclopentane	6.449	0.82	
10	tert-butyl ethyl ether(ETBE)	6.638	0.87	3.65
11	1-propanol	7.516	1.12	
12	sec-butanol	8.902	1.51	
13	iso-butanol	9.251	1.61	
14	1,2-dimethoxyethane	9.524	1.69	4.88
15	benzene	9.952	1.81	
16	tert-pentanol (tert-amyl alcohol)	10.482	1.96	
17	tert-amyl methyl ether(TAME)	10.610	2.00	2.23
18	1-butanol	12.622	2.56	