

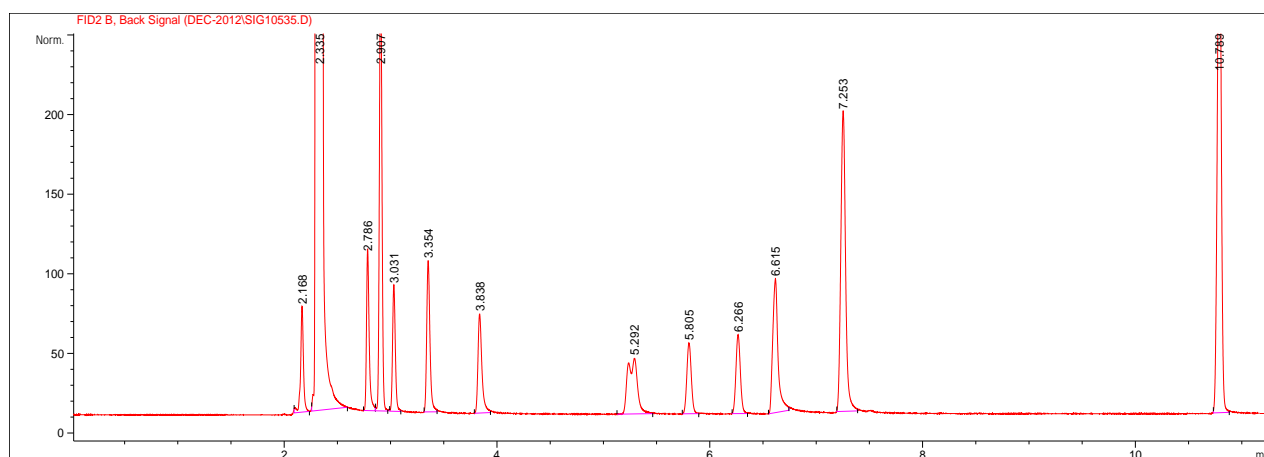
GsBP GC COLUMN

TEST PERFORMANCE SUMMARY

Column Information

Test Conditions

Catalog No.:	7553-3000	Oven Temp.:	TP	Injector:	S/S, 250 °C
Serial No.:	12032594	Carrier Gas	Hydrogen	Detector:	FID, 300 °C
Stationary Phase:	GsBP-Select Liquor	Head Pressure:	5psi	Injection:	1ul
Column Length:	30m	Split Flow:	90ml/min	Holdup Time:	2.168(min)
Column ID:	0.53mm	TP:	65°C 5min 10°C/min		
Film Thickness:	1um		220°C 4min		



Peak No.	Compound	Retention Time (min)	Partition Ratio (k')	Theoretical Plates/m (n)
1	Methanol	2.168	0.000	836
2	Ethanol	2.335	0.077	753
3	1-Propanol	2.786	0.285	1461
4	Ethyl Acetate	2.907	0.341	1524
5	2-Butanol	3.031	0.398	1696
6	Isobutanol	3.354	0.547	1504
7	1-Butanol	3.838	0.770	1364
8	Ethyl Butyrate	5.292	1.440	615
9	n-Butyl Acetate	6.266	1.890	2852
10	3-Pentanol	6.615	2.051	2443
11	Ethyl Lactate	7.253	2.345	3443
12	Ethyl Hexanoate	10.789	3.976	10879